

SOYBEAN DEFOLIATION REFERENCE GUIDE

HOW TO SCOUT

- Look at several locations throughout the field, not just one area
- Estimate the overall level of insect defoliation at each location:
 - Consider the entire canopy, not just the uppermost leaves
 - Where you suspect economic injury, collect individual leaflets from the upper, middle and lower canopy and estimate defoliation of the leaflets
 - Identify responsible pests and confirm they are still present
- Consider an insecticide application if you reach threshold levels

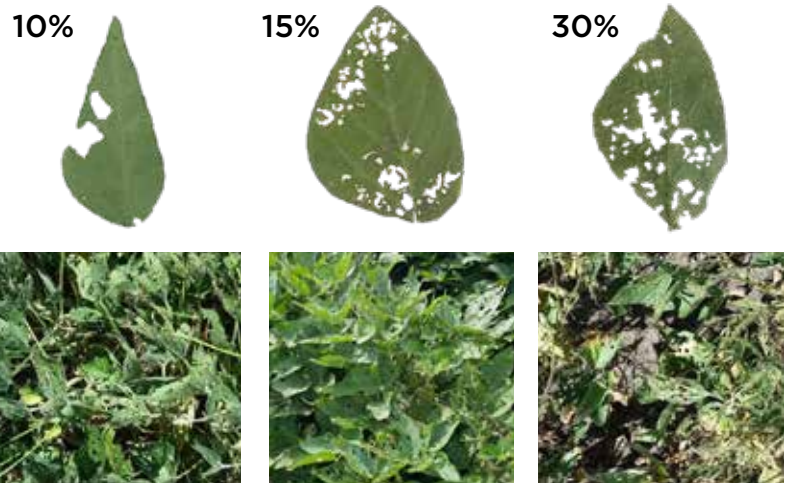
Research project: [Soybean entomology in the North Central region: Management and outreach for new and existing pests \(Click here to see project details\)](#)

Written by Amy Raudenbush, The Ohio State University
 Kelley Tilmon, The Ohio State University
 Nick Seiter, University of Illinois

THRESHOLDS

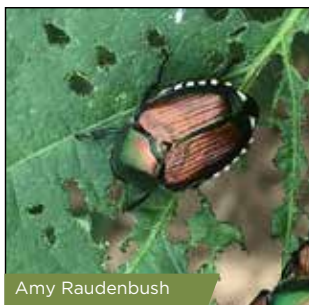
Growth Stage	Description	Threshold
V1 - R2	vegetative - Bloom	30%
R3 - R-5	pod development - fill	10%
R6	full seed	15%

Approximate defoliation levels:



COMMON SOYBEAN DEFOLIATORS

JAPANESE BEETLE



Amy Raudenbush

SILVER SPOTTED SKIPPER



Amy Raudenbush

SOYBEAN LOOPER



John C. French Sr.

BEAN LEAF BEETLE



Amy Raudenbush

GREEN CLOVERWORM



Phil Sloderbeck

GRASSHOPPER



Amy Raudenbush