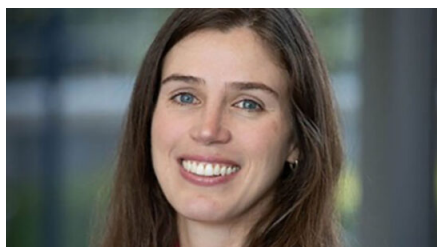


# DANIELA CARRIJO – SOYBEAN RESEARCH PROFILE



Farmer Blog



Daniela Carrijo, Assistant Professor and Extension Specialist, Grain Crop Production, College of Agricultural Sciences, Penn State University

## **Why did you decide to pursue a career that includes soybean research?**

*Soybeans are my favorite crop. I grew up in a region of Brazil that grows lots of soybeans, and my dad continues to farm soybeans and corn in Brazil. I enjoy the crop, because soybeans are resilient compared to other crops and easier to work with than crops like rice and sugarcane, which I have also studied.*

## **What research topic have you completed in the past or are working on now that could have or has had the most significant impact on soybean production?**

*I developed a paper on the effect of cover crop termination timing on soybeans. The research showed that when cover crop termination is managed well, that can reduce drought stress and support soybean yield.*

## **How has the soybean checkoff enhanced your ability to find answers to production problems for farmers?**

*The Soy Checkoff helps greatly, and the support for soybean research is valuable. Feedback from the soybean board provides guidance for my research, and working with these farmers is the most fun part of my job. I can make sure the research I do is useful for farmers.*

*On the national Soy Checkoff level, I participate in [Science for Success](#), which supports extension research and professional development. This investment has helped me improve presentation and writing skills, and it provides a group for help and encouragement.*

## **Within your area of expertise, what are the top two or three general recommendations you would offer farmers to improve their management practices?**

- *Start with the basics when investing in a crop, like doing soil tests, before exploring “extras” like new treatments or technologies.*
- *Aim to get planting date right, depending on equipment and weather conditions. Planting date translates into yield at no extra cost.*
- *Focus on getting a return on investment, rather than just growing the highest-yielding crop. The highest yields don’t always pay off.*

**Within your area of expertise, what do you consider to be critical soybean research needs that can impact the profitability of farmers in the future?**

*We need to research practices and technologies to deal with erratic weather, like drought and heavy rainfall. These issues are becoming more frequent, and they are major factors in rainfed fields. We also need to research options to manage deer and other animal damage.*

**SRIN Articles:**

[A Fresh Look at Soybean Maturity Recommendations](#)



**This website is funded by the soybean checkoff**



©2026 Soybean Research & Information Network