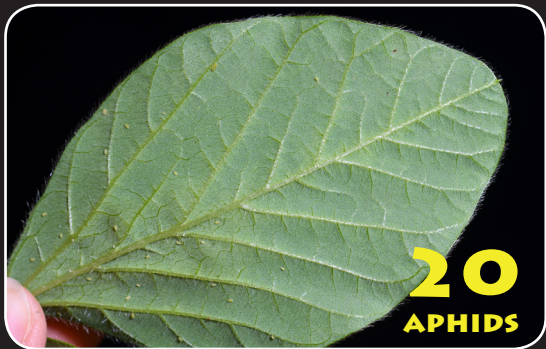


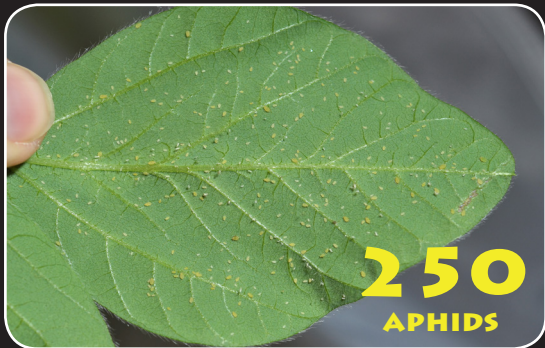
# A VISUAL GUIDE TO COUNTING SOYBEAN APHIDS



Soybean aphid densities vary from leaflet to leaflet. To estimate aphids per plant, count the number of aphids per leaflet and then add them all up.

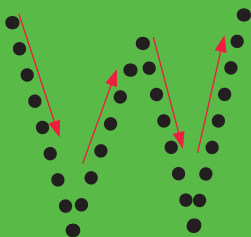


# A VISUAL GUIDE TO COUNTING SOYBEAN APHIDS

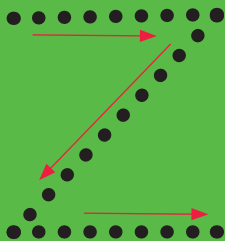


# WALKING PATTERNS FOR SAMPLING SOYBEAN APHIDS

PATTERN 1



PATTERN 2



- Sample 30-40 plants for every 50 acres of soybean
- Begin scouting in June and continue with weekly sampling until aphid numbers decline, often in late August

# WHEN DO I SPRAY?

- Sample fields every 7-10 days
- Treat when soybean aphids average *250 per plant* AND aphid numbers are *increasing*
- Treating after seed fill may *not* result in higher yield
- Continue sampling even after insecticide application to reduce aphid flare-ups



For more information on soybean aphid management, scan this QR code or visit this website:

[soybeanresearchinfo.com](http://soybeanresearchinfo.com)