



**Figure 1. Damping-off of soybean in a field following heavy spring rains. (NDSU)**

# Pythium Damping-off of Soybean

**Kim Zitnick-Anderson, Ph.D.,**  
Post-doctoral Research Specialist

**Samuel Markell, Ph.D.,**  
Extension Plant Pathologist

**Berlin Nelson Jr., Ph.D.,**  
Soybean Pathologist

Damping-off, the rotting and death of seeds and seedlings, can be a devastating disease and is of great economic importance to soybean production. Damping-off (Figure 1) mainly affects soybean plants prior to seed germination and throughout the seedling stage.

Any field with damping-off may experience a significant stand reduction. Yield losses of up to 30 percent have been recorded in other states. As acreage of soybeans in North Dakota continues to increase, so do economically damaging diseases such as damping-off.

## Cause

*Pythiums* are a group of fungal-like organisms (Oomycetes) that are closely related to the *Phytophthora* pathogen. Multiple species of *Pythium* are found in association with soybean roots in North Dakota. The majority of them cause pre- or postemergence damping-off.

In response to increased damage from damping-off, the North Dakota Agricultural Experiment Station conducted research to identify *Pythium* species causing damping-off. At least 27 species of *Pythium* were found in soybean roots, but seven species were predominant.

They are: *P. ultimum*, *P. heterothallicum*, *P. irregulare*, *P. attrantheridium*, *P. sylvaticum*, *P. perplexum* and one unidentified species. The identity of the *Pythium* species causing disease is important due to recent studies showing that not all species are controlled by the same fungicide seed treatments.

## Symptoms

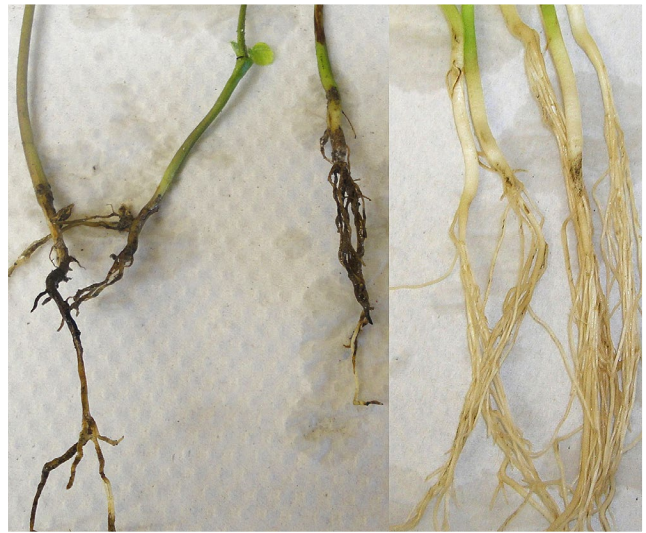
Pre- and postemergence damping-off are usually the first symptoms of infection by *Pythium* observed in the field. Symptoms of pre-emergence damping-off include seeds failing to germinate and/or the total disintegration of the seed (Figure 2) while in the soil.

Post-emergence damping-off is visible first as lesions and discoloration on the roots (Figure 3). Once infected, the roots will begin to disintegrate and rot. The rotting root system eventually will lead to the collapse of the seedling.

# Pythium Damping-off of Soybean



**Figure 2. Decayed seed (arrows) due to infection by *Pythium*.** (NDSU)



**Figure 3. Three soybean seedlings showing root rot from *Pythium*, compared with five healthy seedlings on the right.** (NDSU)

Young plants are most susceptible to postemergence damping-off, while adult plants are not readily infected due to the thickness and lignification of the root tissue.

Other pathogens such as the Oomycete *Phytophthora sojae* and the fungi *Fusarium* and *Rhizoctonia* also can cause damping-off under certain conditions. Determining the exact cause of damping-off can be difficult because plants can be destroyed quickly, leaving little evidence of the causal agent.

## Disease Cycle

*Pythium* species can survive for up to 10 years in soil as sexual, thick-walled oospores. When soils are saturated, oospores can germinate and produce swimming spores called zoospores. Disease develops when spores infect the soybean root and the pathogen mycelium (mold-like structure) spreads inside the plant.

New zoospores can be produced in infected roots, spread in water to other plants and cause secondary infection. Spores can travel great distances in overland flooding, potentially introducing high levels of inoculum and new species to flooded fields.

High soil moisture usually is associated with high levels of damping-off by *Pythium*. During dry periods at planting and the seedling stage, damping-off by *Pythium* is rare.

The NDSU Extension Service does not endorse commercial products or companies even though reference may be made to tradenames, trademarks or service names. NDSU encourages you to use and share this content, but please do so under the conditions of our Creative Commons license. You may copy, distribute, transmit and adapt this work as long as you give full attribution, don't use the work for commercial purposes and share your resulting work similarly. For more information, visit [www.ag.ndsu.edu/agcomm/creative-commons](http://www.ag.ndsu.edu/agcomm/creative-commons).

**For more information on this and other topics, see [www.ag.ndsu.edu](http://www.ag.ndsu.edu)**

County commissions, North Dakota State University and U.S. Department of Agriculture cooperating. North Dakota State University does not discriminate on the basis of age, color, disability, gender expression/identity, genetic information, marital status, national origin, public assistance status, race, religion, sex, sexual orientation, or status as a U.S. veteran. Direct inquiries to the Vice President for Equity, Diversity and Global Outreach, 205 Old Main, (701) 231-7708. This publication will be made available in alternative formats for people with disabilities upon request, (701) 231-7881.

1M-11-14

## Management

**Fungicide seed treatment** – Seed treatments are a useful management tool for *Pythium* and are most effective when the soybean is most vulnerable to infection (at seed germination). Fungicide seed treatment research is ongoing; products available and efficacy data are changing continually. Consult the “North Dakota Field Crop Fungicide Guide” (PP622) for products labeled and recommended for Oomycetes (*Pythium* and *Phytophthora*).

**Maintain good drainage** – Managing areas that are prone to flooding will limit infection and the spread of *Pythium*. Managing flooding by tile drainage or ditching may be beneficial.

**Resistance** – No resistant varieties of soybean exist. However, cultivars may differ in their susceptibility to damping-off.

**Crop rotation** – *Pythium* species have a very wide host range and are long-lived in soil; therefore, the effectiveness of crop rotation for managing *Pythium* damping-off is limited.